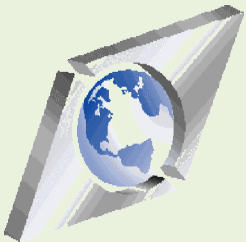




RampSIDE™: Supervisor Ramp Dispatch Module

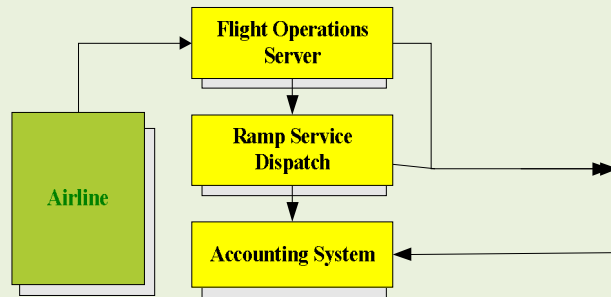
The logic in airport fueling logistics!



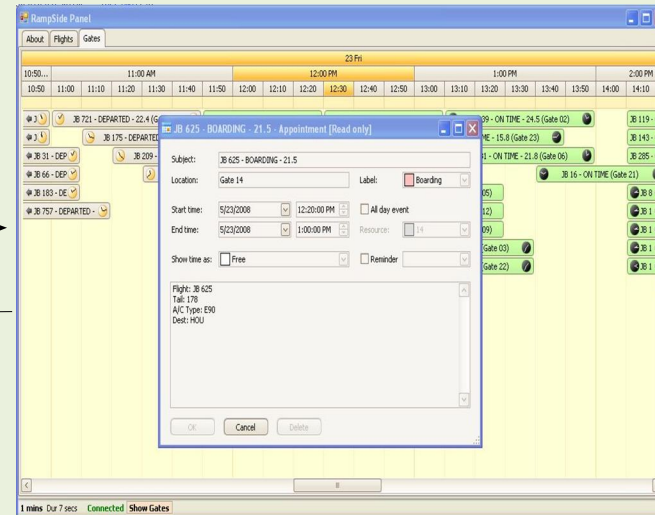
Logixcraft Corporation
.....fueling solutions with technology!



Logicraft Corporation



RampSIDE: Supervisor Panel



Ramp service supervisors that manage aircraft services required to turn around aircraft on schedule, face major difficulties in effectively planning and managing the scheduling of their tasks and resources without timely and accurate flight and aircraft information. Airport service contractors and Airline service agents require a State-of-the-Art dispatch and data capture systems to support a paperless operation. Presently the delivery of these functions is paper based and therefore inefficient and prone to errors.

Logicraft developed RampSIDE© - Supervisor Tablet to resolve such problems in a most cost effective fashion.

The RampSIDE©: Supervisor Tablet unit is designed to interface with the Airline's flight operations system using wireless Internet communications to obtain flight and aircraft status as well as any special service requests on the ramp, to maintain and display the active status of the gates and flights germane to ramp operations as changes to flights and equipment occur.

Wireless coverage on airport grounds can have huge variations in signal strength. Therefore, the RampSIDE© - Supervisor Tablet was designed from the ground up to use an intelligent auto-sensing scheme, where the unit recognizes and polls the airline's operating system whenever the signal permits. It updates the flight display automatically and indicates "airline system status" as the lapsed number of minutes since the last update was received.

It incorporates an instinctive and consistent touch-me-and-choose design, always following the rule – "warn if there is a problem, and record what happens when reality does not match posted data". It displays flight and aircraft information in

both, text as well as in graphic formats either by Gate, group of Gates or Departure Time.

RampSIDE© - Supervisor obtains its flight information directly from the Airline's operating system and in addition, displays the resources available for the required tasks. Upon completion of the assignments, a completed service transaction record is then sent to a designated system address.

RampSIDE©: Supervisor has operated for years in high volume airports such as JFK and has had its human interface design supported with active input from ramp personnel to enhance the ground services workflow.

As always, Logicraft addresses operational issues by providing efficient and cost effective solutions with technology.

For additional information please contact our Marketing Department:

Logicraft Corporation
JFK International Airport
P.O. Box 300624
Jamaica, NY 11430

Tel: (718)632-0100; Fax: (718)632-2750;
E-Mail: marketing@logicraft.net